

Courtesy Of Rongmei Cheng Of Initia Real Estate

\$675,000 - 37 1225 Wanyandi Road, Edmonton

MLS® #E4416938

\$675,000

3 Bedroom, 2.50 Bathroom, 2,087 sqft
Condo / Townhouse on 0.00 Acres

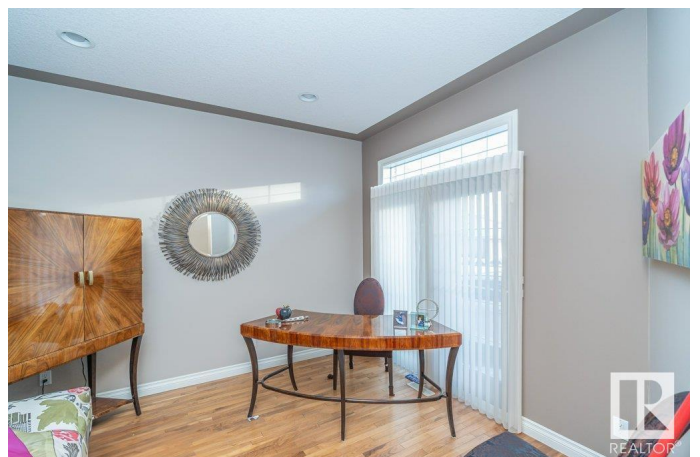
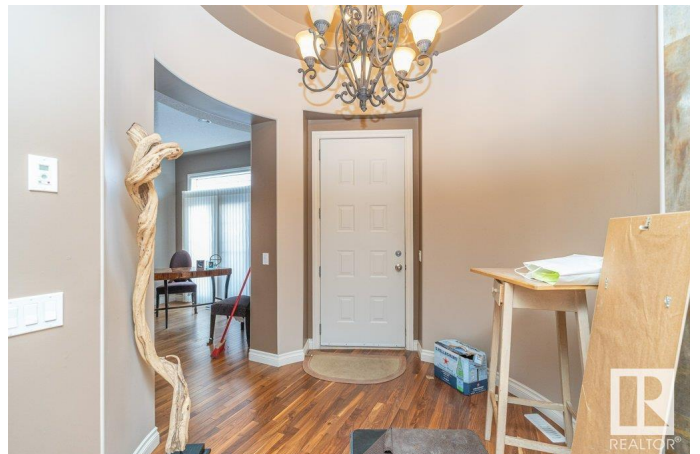
Oleskiw, Edmonton, AB

The house is sold as is. Welcome to Eagle Point at Country Club in Oleskiw! This exquisite high-end adult/ private gated community. The stunning and executive home features soaring 11.5' high ceilings, a bright, open concept floor plan with an abundance of windows. Offering 2,087 Sq. ft. of thoughtfully designed living space of main floor, this home has 3 bedrooms, a den, 2.5 bath, laundry, and a fully finished basement. The kitchen boasts maple cabinets, countertops, a pantry, & stainless appliances. The dining area with gas fireplace & spacious main bedroom with 5-piece ensuite with a relaxing jetted tub featuring a walk-in closet. The fully finished basement includes high ceilings, a wet bar, a large REC room, a 2nd & 3rd bedroom, a sauna and a 3pce bath. The triple heated garage offers large workshop space. Additional features include central vacuum with attachments, a water softener, and air conditioning. Enjoy Well-maintenance living with modern amenities in this serene, adult-oriented community!

Built in 2005

Essential Information

MLS® #	E4416938
Price	\$675,000



Bedrooms	3
Bathrooms	2.50
Full Baths	2
Half Baths	1
Square Footage	2,087
Acres	0.00
Year Built	2005
Type	Condo / Townhouse
Sub-Type	Detached Condominium
Style	Bungalow
Status	Active

Community Information

Address	37 1225 Wanyandi Road
Area	Edmonton
Subdivision	Oleskiw
City	Edmonton
County	ALBERTA
Province	AB
Postal Code	T6M 2W7

Amenities

Amenities	Air Conditioner, Bar, Closet Organizers, Deck, Gazebo, No Animal Home, No Smoking Home, Parking-Extra, Sauna; Swirlpool; Steam, Security Door, See Remarks
Parking Spaces	6
Parking	Heated, Triple Garage Attached

Interior

Interior Features	ensuite bathroom
Appliances	See Remarks
Heating	Forced Air-1, Natural Gas
Fireplace	Yes
Fireplaces	Glass Door
Stories	1
Has Basement	Yes
Basement	Full, Finished

Exterior

Exterior	Wood, Brick, Stucco
Exterior Features	Commercial, Corner Lot, Fenced, Gated Community, Golf Nearby, Landscaped, Schools, Shopping Nearby
Roof	Cedar Shakes
Construction	Wood, Brick, Stucco
Foundation	Concrete Perimeter

School Information

Elementary	PATRICIA HEIGHTS SCHOOL
Middle	HILLCREST SCHOOL
High	JASPER PLACE SCHOOL

Additional Information

Date Listed	January 3rd, 2025
Days on Market	90
Zoning	Zone 22
Condo Fee	\$702

DATA IS DEEMED RELIABLE BUT IS NOT GUARANTEED ACCURATE BY THE REALTORS® ASSOCIATION OF EDMONTON. COPYRIGHT 2025 BY THE REALTORS® ASSOCIATION OF EDMONTON. ALL RIGHTS RESERVED. Trademarks are owned or controlled by the Canadian Real Estate Association (CREA) and identify real estate professionals who are members of CREA (REALTOR®, REALTORS®) and/or the quality of services they provide (MLS®, Multiple Listing Service®)

Listing information last updated on April 3rd, 2025 at 4:17am MDT