

Courtesy Of Eddy A Jomha Of MaxWell Polaris

\$420,000 - 2 7210 96 Street, Edmonton

MLS® #E4419528

\$420,000

2 Bedroom, 2.50 Bathroom, 1,401 sqft
Condo / Townhouse on 0.00 Acres

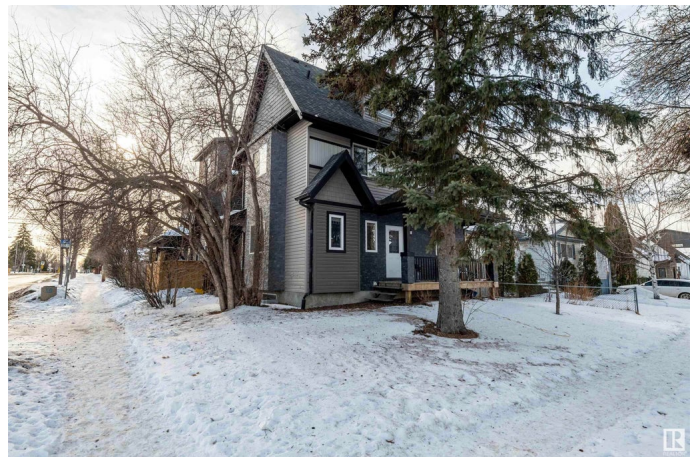
Ritchie, Edmonton, AB

CHIC 1380 sq 2 bedroom 3 bathroom 2 storey townhouse located in the upscale neighbourhood of Ritchie. This beautiful open concept layout features a modern style 2 tone kitchen with granite counter tops and stainless steel appliances, stunning laminate flooring that flows throughout the main level, large eat in dining room, good sized living room and a 2 piece main floor powder room. Upstairs features 2 big bedrooms, 2 full 4 piece bathrooms and a loft. The large master includes a 4 piece en-suite and a walk in closet. This home is located in the heart of Ritchie close to public transportation and many more great amenities. This home is a must see.

Built in 2013

Essential Information

| | |
|----------------|-----------|
| MLS® # | E4419528 |
| Price | \$420,000 |
| Bedrooms | 2 |
| Bathrooms | 2.50 |
| Full Baths | 2 |
| Half Baths | 1 |
| Square Footage | 1,401 |
| Acres | 0.00 |
| Year Built | 2013 |



| | |
|----------|-------------------|
| Type | Condo / Townhouse |
| Sub-Type | Townhouse |
| Style | 2 Storey |
| Status | Active |

Community Information

| | |
|-------------|------------------|
| Address | 2 7210 96 Street |
| Area | Edmonton |
| Subdivision | Ritchie |
| City | Edmonton |
| County | ALBERTA |
| Province | AB |
| Postal Code | T6E 1B3 |

Amenities

| | |
|-----------|--|
| Amenities | Carbon Monoxide Detectors, No Smoking Home |
| Parking | Single Garage Detached |

Interior

| | |
|-------------------|--|
| Interior Features | ensuite bathroom |
| Appliances | Dishwasher-Built-In, Dryer, Refrigerator, Stove-Electric, Washer |
| Heating | Forced Air-1, Natural Gas |
| Stories | 2 |
| Has Basement | Yes |
| Basement | Full, Unfinished |

Exterior

| | |
|-------------------|--|
| Exterior | Wood, Vinyl |
| Exterior Features | Fenced, Golf Nearby, Playground Nearby, Public Transportation, Shopping Nearby |
| Roof | Asphalt Shingles |
| Construction | Wood, Vinyl |
| Foundation | Concrete Perimeter |

Additional Information

| | |
|----------------|--------------------|
| Date Listed | January 29th, 2025 |
| Days on Market | 65 |
| Zoning | Zone 17 |
| Condo Fee | \$165 |

DATA IS DEEMED RELIABLE BUT IS NOT GUARANTEED ACCURATE BY THE REALTORS® ASSOCIATION OF EDMONTON. COPYRIGHT 2025 BY THE REALTORS® ASSOCIATION OF EDMONTON. ALL RIGHTS RESERVED. Trademarks are owned or controlled by the Canadian Real Estate Association (CREA) and identify real estate professionals who are members of CREA (REALTOR®, REALTORS®) and/or the quality of services they provide (MLS®, Multiple Listing Service®)

Listing information last updated on April 3rd, 2025 at 10:02pm MDT