

\$220,000 - 16 130 Hyndman Crescent, Edmonton

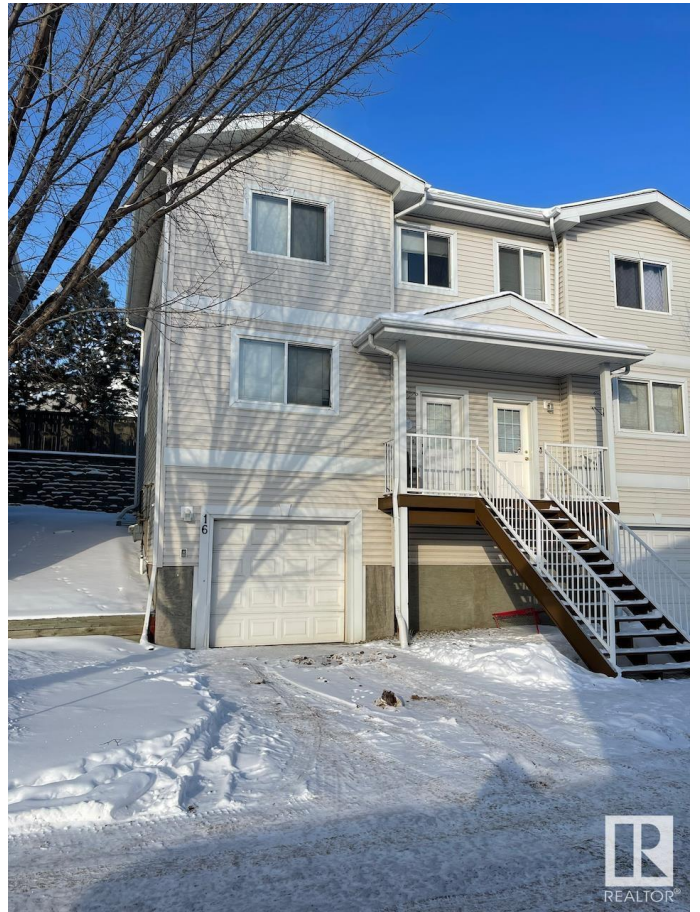
MLS® #E4419958

\$220,000

2 Bedroom, 2.50 Bathroom, 1,185 sqft
Condo / Townhouse on 0.00 Acres

Canon Ridge, Edmonton, AB

This townhome features a single attached garage and is located in the quiet community of Canon Ridge. The main floor of this property includes a bright front living room, a kitchen with huge peninsula, and an adjoining dining space. There is also a convenient half bathroom. Upstairs your primary bedroom features a 3pc. ensuite and walk-in closet. The second bedrooms is also huge and has easy access to the main 4pc. bathroom. Enjoy convenient laundry hook-ups and storage in the basement with access to the garage. Close to schools, shopping, transit, and major commuting routes.



Built in 2007

Essential Information

MLS® #	E4419958
Price	\$220,000
Bedrooms	2
Bathrooms	2.50
Full Baths	2
Half Baths	1
Square Footage	1,185
Acres	0.00
Year Built	2007
Type	Condo / Townhouse
Sub-Type	Half Duplex

Style 2 Storey
Status Active

Community Information

Address 16 130 Hyndman Crescent
Area Edmonton
Subdivision Canon Ridge
City Edmonton
County ALBERTA
Province AB
Postal Code T5A 0E8

Amenities

Amenities Closet Organizers, Front Porch
Parking Spaces 2
Parking Single Garage Attached

Interior

Interior Features ensuite bathroom
Appliances See Remarks
Heating Forced Air-1, Natural Gas
Stories 3
Has Basement Yes
Basement Partial, Finished

Exterior

Exterior Wood, Vinyl
Exterior Features Golf Nearby, Landscaped,
Schools, Shopping Nearby
Roof Asphalt Shingles
Construction Wood, Vinyl
Foundation Concrete Perimeter

Additional Information

Date Listed January 29th, 2025
Days on Market 65
Zoning Zone 35
Condo Fee \$352



EDMONTON. COPYRIGHT 2025 BY THE REALTORS® ASSOCIATION OF EDMONTON. ALL RIGHTS RESERVED. Trademarks are owned or controlled by the Canadian Real Estate Association (CREA) and identify real estate professionals who are members of CREA (REALTOR®, REALTORS®) and/or the quality of services they provide (MLS®, Multiple Listing Service®)

Listing information last updated on April 3rd, 2025 at 10:02pm MDT