

\$574,500 - 3311 21 Ave, Edmonton

MLS® #E4421255

\$574,500

3 Bedroom, 2.50 Bathroom, 2,142 sqft
Single Family on 0.00 Acres

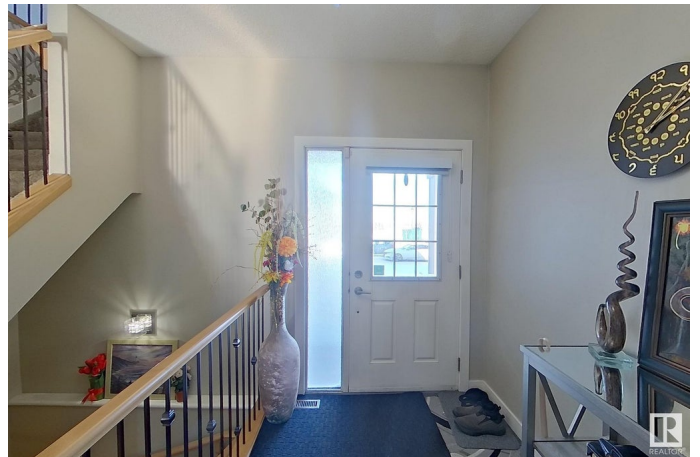
Laurel, Edmonton, AB

This beautifully maintained 2-story home is located across from a park with a tree-lined path leading to a lake. From the moment you enter, you'll feel at home. The main floor features a spacious kitchen with plenty of cabinets and counter space, quartz countertops, stainless steel appliances, and a walk-through pantry that leads to the mudroom with main floor laundry with cabinets and sink. The large living room has hardwood floors, a cozy Gas fireplace, and lots of natural light. Step outside to the professionally landscaped backyard with a large brick patio perfect for entertaining. Upstairs, you'll find a bonus room with high vaulted ceilings, 3 bedrooms, including a master bedroom with a walk-in closet and a luxurious ensuite featuring a Jet jacuzzi tub, separate shower, and dual sinks. Additional features include central air conditioner, on-demand hot water Tankless, a garburator, and 9-foot ceilings on the main floor and basement. Basement separate entry is possible from the garage if needed.

Built in 2010

Essential Information

| | |
|----------|-----------|
| MLS® # | E4421255 |
| Price | \$574,500 |
| Bedrooms | 3 |



| | |
|----------------|------------------------|
| Bathrooms | 2.50 |
| Full Baths | 2 |
| Half Baths | 1 |
| Square Footage | 2,142 |
| Acres | 0.00 |
| Year Built | 2010 |
| Type | Single Family |
| Sub-Type | Detached Single Family |
| Style | 2 Storey |
| Status | Active |

Community Information

| | |
|-------------|-------------|
| Address | 3311 21 Ave |
| Area | Edmonton |
| Subdivision | Laurel |
| City | Edmonton |
| County | ALBERTA |
| Province | AB |
| Postal Code | T6T 0L1 |

Amenities

| | |
|-----------|---|
| Amenities | On Street Parking, Air Conditioner, Carbon Monoxide Detectors, Ceiling 9 ft., Front Porch, Hot Water Tankless, Patio, Television Connection, Vaulted Ceiling, Vinyl Windows, Vacuum System-Roughed-In, HRV System, 9 ft. Basement Ceiling |
| Parking | Double Garage Attached, Insulated, Over Sized |

Interior

| | |
|-------------------|---|
| Interior Features | ensuite bathroom |
| Appliances | Air Conditioning-Central, Dishwasher-Built-In, Dryer, Garage Control, Garage Opener, Garburator, Hood Fan, Refrigerator, Stove-Electric, Washer, Window Coverings |
| Heating | Forced Air-1, Natural Gas |
| Fireplace | Yes |
| Fireplaces | Tile Surround |
| Stories | 2 |
| Has Basement | Yes |
| Basement | Full, Unfinished |

Exterior

| | |
|-------------------|--|
| Exterior | Wood, Stone, Vinyl |
| Exterior Features | Fenced, Flat Site, Landscaped, No Back Lane, Playground Nearby, Schools, Shopping Nearby |
| Roof | Asphalt Shingles |
| Construction | Wood, Stone, Vinyl |
| Foundation | Concrete Perimeter |

Additional Information

| | |
|----------------|---------------------|
| Date Listed | February 12th, 2025 |
| Days on Market | 51 |
| Zoning | Zone 30 |

DATA IS DEEMED RELIABLE BUT IS NOT GUARANTEED ACCURATE BY THE REALTORS® ASSOCIATION OF EDMONTON. COPYRIGHT 2025 BY THE REALTORS® ASSOCIATION OF EDMONTON. ALL RIGHTS RESERVED. Trademarks are owned or controlled by the Canadian Real Estate Association (CREA) and identify real estate professionals who are members of CREA (REALTOR®, REALTORS®) and/or the quality of services they provide (MLS®, Multiple Listing Service®)

Listing information last updated on April 3rd, 2025 at 10:02pm MDT