

Courtesy Of Darryl J Van Eerde Of Liv Real Estate

\$170,000 - 202 9917 110 Street, Edmonton

MLS® #E4421393

\$170,000

2 Bedroom, 1.00 Bathroom, 706 sqft
Condo / Townhouse on 0.00 Acres

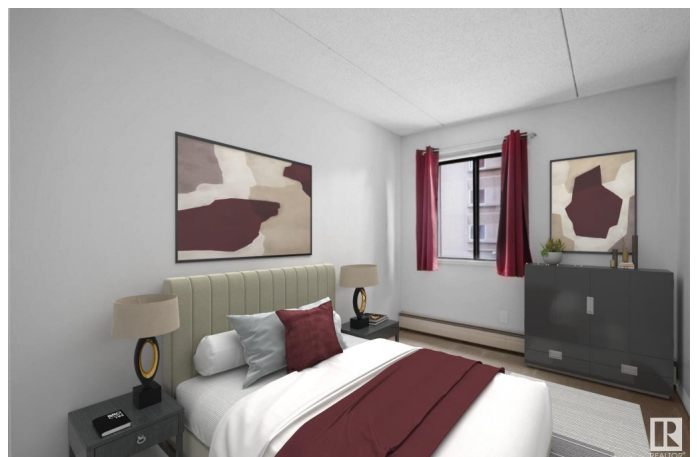
W&#x2013;hkw&#x2013;ant&#x2013;win, Edmonton, AB

Discover upscale urban living in this impeccable 2-bedroom condo, ideally located just steps from Grandin Station. Nestled in the heart of Edmonton's bustling downtown, every corner of this residence exudes comfort and style. Housed within a solid concrete structure, residents not only benefit from superior soundproofing but also enjoy the peace of mind that comes with a secured entrance. The interiors are a testament to refined city living; from the luminous open spaces to the recently upgraded 4-piece bathroom which combines elegance and functionality. Within moments of your door, the best of downtown awaits - trendy eateries, shopping galore, and vibrant nightlife. Whether you're a student, a professional craving convenience or an urbanite seeking the buzz of city life, this condo is the perfect haven. Some photos have been virtually staged.

Built in 1981

Essential Information

MLS® #	E4421393
Price	\$170,000
Bedrooms	2
Bathrooms	1.00
Full Baths	1
Square Footage	706



Acres	0.00
Year Built	1981
Type	Condo / Townhouse
Sub-Type	Apartment High Rise
Style	Single Level Apartment
Status	Active

Community Information

Address	202 9917 110 Street
Area	Edmonton
Subdivision	WÃ©hkwÃ©ntÃ©win
City	Edmonton
County	ALBERTA
Province	AB
Postal Code	T5K 2N4

Amenities

Amenities	Detectors Smoke, No Animal Home, No Smoking Home, Security Door, Television Connection
Parking	Stall

Interior

Appliances	Dishwasher-Built-In, Dryer, Hood Fan, Refrigerator, Stove-Electric, Washer
Heating	Baseboard, Hot Water, Natural Gas
# of Stories	13
Stories	1
Has Basement	Yes
Basement	None, No Basement

Exterior

Exterior	Concrete, Brick
Exterior Features	Airport Nearby, Golf Nearby, Landscaped, Playground Nearby, Schools, Shopping Nearby, Ski Hill Nearby, View Downtown
Roof	Tar & Gravel
Construction	Concrete, Brick
Foundation	Concrete Perimeter

School Information

Elementary	Oliver School
------------	---------------

Middle	Westminster School
High	Victoria School

Additional Information

Date Listed	February 13th, 2025
Days on Market	56
Zoning	Zone 12
Condo Fee	\$717

DATA IS DEEMED RELIABLE BUT IS NOT GUARANTEED ACCURATE BY THE REALTORS® ASSOCIATION OF EDMONTON. COPYRIGHT 2025 BY THE REALTORS® ASSOCIATION OF EDMONTON. ALL RIGHTS RESERVED. Trademarks are owned or controlled by the Canadian Real Estate Association (CREA) and identify real estate professionals who are members of CREA (REALTOR®, REALTORS®) and/or the quality of services they provide (MLS®, Multiple Listing Service®)

Listing information last updated on April 10th, 2025 at 8:17pm MDT