

\$799,500 - 1615 14 Street, Edmonton

MLS® #E4423860

\$799,500

6 Bedroom, 3.50 Bathroom, 2,397 sqft
Single Family on 0.00 Acres

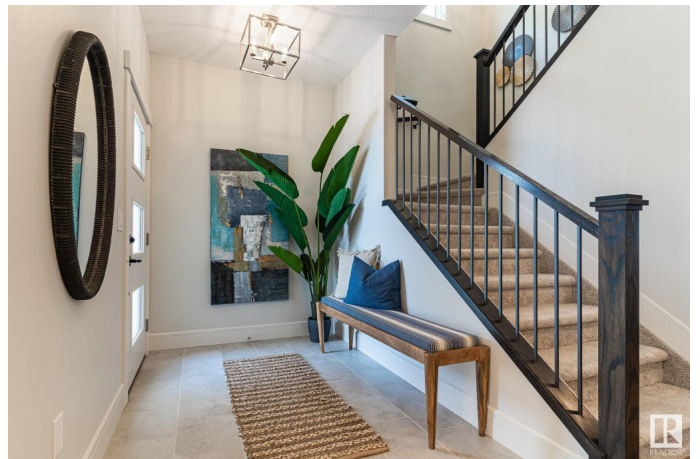
Aster, Edmonton, AB

Step into luxury with this stunning Coventry Homes showhome, complete with a LEGAL @-BEDROOM BASEMENT SUITE—perfect for rental income or extended family. The main floor is centered around a chef-inspired kitchen, featuring a walk-through pantry, spice kitchen, and ample cabinetry, seamlessly flowing into the spacious living and dining areas with a cozy gas fireplace. A versatile main-floor den adds flexibility. Upstairs, the expansive primary suite boasts a spa-like 5-piece ensuite with a soaker tub, dual sinks, stand-up shower, and walk-in closet. Three more bedrooms, a full bath, bright bonus room, and upstairs laundry complete this thoughtfully designed home. An absolute must-see!

Built in 2021

Essential Information

MLS® #	E4423860
Price	\$799,500
Bedrooms	6
Bathrooms	3.50
Full Baths	3
Half Baths	1
Square Footage	2,397
Acres	0.00
Year Built	2021



Type	Single Family
Sub-Type	Detached Single Family
Style	2 Storey
Status	Active

Community Information

Address	1615 14 Street
Area	Edmonton
Subdivision	Aster
City	Edmonton
County	ALBERTA
Province	AB
Postal Code	T6T 2N7

Amenities

Amenities	Air Conditioner, Carbon Monoxide Detectors, Ceiling 9 ft., Deck, Detectors Smoke, Smart/Program. Thermostat, Vinyl Windows, HRV System, 9 ft. Basement Ceiling
Parking	Double Garage Attached

Interior

Interior Features	ensuite bathroom
Appliances	Air Conditioning-Central, Hood Fan, Oven-Microwave, Stove-Gas, Dryer-Two, Refrigerators-Two, Stoves-Two, Washers-Two, Dishwasher-Two
Heating	Forced Air-2, Natural Gas
Fireplace	Yes
Fireplaces	Mantel
Stories	3
Has Basement	Yes
Basement	Full, Finished

Exterior

Exterior	Wood, Vinyl
Exterior Features	Landscaped, Playground Nearby, Public Transportation, Schools, Shopping Nearby
Roof	Asphalt Shingles
Construction	Wood, Vinyl
Foundation	Concrete Perimeter

Additional Information

Date Listed March 4th, 2025

Days on Market 30

Zoning Zone 30

DATA IS DEEMED RELIABLE BUT IS NOT GUARANTEED ACCURATE BY THE REALTORS® ASSOCIATION OF EDMONTON. COPYRIGHT 2025 BY THE REALTORS® ASSOCIATION OF EDMONTON. ALL RIGHTS RESERVED. Trademarks are owned or controlled by the Canadian Real Estate Association (CREA) and identify real estate professionals who are members of CREA (REALTOR®, REALTORS®) and/or the quality of services they provide (MLS®, Multiple Listing Service®)

Listing information last updated on April 3rd, 2025 at 2:47am MDT