

\$333,800 - 36 2922 Maple Way, Edmonton

MLS® #E4424285

\$333,800

3 Bedroom, 2.50 Bathroom, 1,300 sqft
Condo / Townhouse on 0.00 Acres

Maple Crest, Edmonton, AB

THIS IS WHERE YOU WANT TO LIVE!

Located in the the desirable South-East community of Maple Crest, this NEWER, 3-bedroom / 3-bathroom TOWNHOME provides a Bright Open Plan with 9' ceilings that creates a true feeling of space when you enter! The main floor highlights include a great kitchen with GRANITE counters, BIG WINDOWS, a spacious eating area, a LARGE Living Room, Main Floor laundry and HARDWOOD flooring! The upper level features 3 good sized bedrooms, the main 4-piec bathroom, plus the Master Bedroom includes a walk-in closet AND a 4-piece ensuite. The basement level provides extra stroage and easy access to the ATTACHED DOUBLE GARAGE! In a GREAT South-East location, you have easy access to shopping, transit, parks, and playgrounds PLUS you are in close proximity to the Henday and Whitemud Freeways. The Townhome has low condo fees and is PERFECT for First Time Buyers, Investors, and Young Families wanting to live in a GREAT community. WELCOME HOME!

Built in 2015

Essential Information

MLS® #	E4424285
Price	\$333,800



Bedrooms	3
Bathrooms	2.50
Full Baths	2
Half Baths	1
Square Footage	1,300
Acres	0.00
Year Built	2015
Type	Condo / Townhouse
Sub-Type	Townhouse
Style	2 Storey
Status	Active

Community Information

Address	36 2922 Maple Way
Area	Edmonton
Subdivision	Maple Crest
City	Edmonton
County	ALBERTA
Province	AB
Postal Code	T6T 1A5

Amenities

Amenities	Detectors Smoke, Parking-Visitor, Patio
Parking Spaces	2
Parking	Double Garage Attached

Interior

Interior Features	ensuite bathroom
Appliances	Dishwasher-Built-In, Dryer, Refrigerator, Stove-Electric, Washer
Heating	Forced Air-1, Natural Gas
Stories	2
Has Basement	Yes
Basement	Partial, Partially Finished

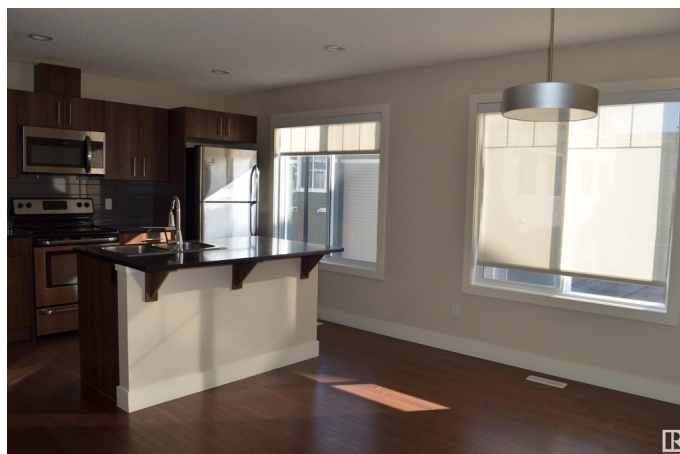
Exterior

Exterior	Wood, Stone, Vinyl
Exterior Features	Low Maintenance Landscape, Public Transportation, Schools, Shopping Nearby
Roof	Asphalt Shingles

Construction Wood, Stone, Vinyl
Foundation Concrete Perimeter

Additional Information

Date Listed March 6th, 2025
Days on Market 29
Zoning Zone 30
Condo Fee \$205



DATA IS DEEMED RELIABLE BUT IS NOT GUARANTEED ACCURATE BY THE REALTORS® ASSOCIATION OF EDMONTON. COPYRIGHT 2025 BY THE REALTORS® ASSOCIATION OF EDMONTON. ALL RIGHTS RESERVED. Trademarks are owned or controlled by the Canadian Real Estate Association (CREA) and identify real estate professionals who are members of CREA (REALTOR®, REALTORS®) and/or the quality of services they provide (MLS®, Multiple Listing Service®)

Listing information last updated on April 4th, 2025 at 6:02am MDT