

Courtesy Of Brittany M Primeau Of KIC Realty

\$215,000 - 1404 10388 105 Street, Edmonton

MLS® #E4424752

\$215,000

1 Bedroom, 1.00 Bathroom, 538 sqft

Condo / Townhouse on 0.00 Acres

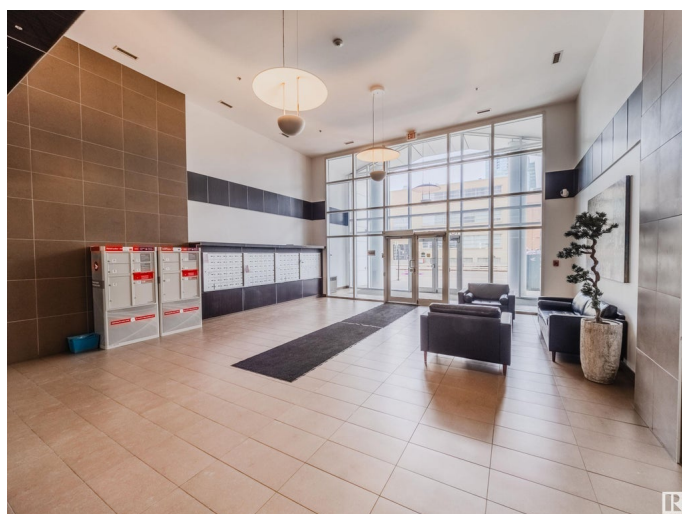
Downtown (Edmonton), Edmonton, AB

Live the Downtown Lifestyle with this executive One Bedroom right in the heart of the action at ROGERS PLACE and NEW ICE DISTRICT! Adding this to your Rental Portfolio, or as young buyer looking for the heart of the city, this location is dialed in! Next door to dining, nightlife and GRANT MACEWAN! This unit has amazing views onto the Ice District, granite countertops/backsplash, open concept kitchen and living space, stainless-steel appliances, front load washer & dryer and hunter douglas window coverings throughout, as well as titled underground parking. Fresh paint and newer carpets, as well as a secured building!

Built in 2009

Essential Information

MLS® #	E4424752
Price	\$215,000
Bedrooms	1
Bathrooms	1.00
Full Baths	1
Square Footage	538
Acres	0.00
Year Built	2009
Type	Condo / Townhouse
Sub-Type	Apartment High Rise



Style Single Level Apartment
Status Active

Community Information

Address 1404 10388 105 Street
Area Edmonton
Subdivision Downtown (Edmonton)
City Edmonton
County ALBERTA
Province AB
Postal Code T5J 0C2

Amenities

Amenities Air Conditioner, No Animal Home, No Smoking Home, Patio, Vinyl Windows, See Remarks
Parking Spaces 1
Parking Heated, Underground

Interior

Appliances Dishwasher-Built-In, Dryer, Refrigerator, Stove-Electric, Washer
Heating Hot Water, Natural Gas
of Stories 22
Stories 1
Has Basement Yes
Basement None, No Basement

Exterior

Exterior Concrete, Stucco
Exterior Features Public Transportation, Schools, Shopping Nearby, View Downtown, See Remarks
Roof Tar & Gravel
Construction Concrete, Stucco
Foundation Concrete Perimeter

Additional Information

Date Listed March 7th, 2025
Days on Market 28
Zoning Zone 12
Condo Fee \$406

DATA IS DEEMED RELIABLE BUT IS NOT GUARANTEED ACCURATE BY THE REALTORS® ASSOCIATION OF EDMONTON. COPYRIGHT 2025 BY THE REALTORS® ASSOCIATION OF EDMONTON. ALL RIGHTS RESERVED. Trademarks are owned or controlled by the Canadian Real Estate Association (CREA) and identify real estate professionals who are members of CREA (REALTOR®, REALTORS®) and/or the quality of services they provide (MLS®, Multiple Listing Service®)

Listing information last updated on April 3rd, 2025 at 10:17pm MDT