

\$543,900 - 722 Charlesworth Way, Edmonton

MLS® #E4424853

\$543,900

3 Bedroom, 2.50 Bathroom, 1,780 sqft
Single Family on 0.00 Acres

Charlesworth, Edmonton, AB

One of the biggest in size, Dolce vita's show home duplex, beautifully painted with pastel colors & wrapped in wall papers, centrally air-conditioned, built on 8500+ sqft pie-shaped lot. Heated tandem garage (painted, high ceiling with chandeliers, side door) to walk through big pantry to spacious kitchen with 2 toned & tinted glass cabinetry & quartz countertop. Main floor having 9 feet ceiling height, ample storage & large size windows in living area with great view of the creek. 3 bed rooms, 2.5 bathrooms (5 piece ensuite bathroom & double vanity), bonus room & laundry on upper floor. Decorated with high end finishings, wall papers and quartz countertops with lots of storage space. Creek facing, landscaped, fenced backyard surrounded by fruit trees with finished deck, fire pit & 15 feet wide side entrance with beautiful door & Alum/stone outdoor finish having concrete entrance make this dwelling one of kind properties. Disc course, skating loop, play-ground & plaza are at walking distance.

Built in 2015

Essential Information

MLS® #	E4424853
Price	\$543,900



Bedrooms	3
Bathrooms	2.50
Full Baths	2
Half Baths	1
Square Footage	1,780
Acres	0.00
Year Built	2015
Type	Single Family
Sub-Type	Half Duplex
Style	2 Storey
Status	Active

Community Information

Address	722 Charlesworth Way
Area	Edmonton
Subdivision	Charlesworth
City	Edmonton
County	ALBERTA
Province	AB
Postal Code	T6X 2E9

Amenities

Amenities	Air Conditioner, Ceiling 9 ft., Closet Organizers, Deck, Detectors Smoke, Exterior Walls- 2"x6", Fire Pit, Hot Water Natural Gas, Low Flow Faucets/Shower, No Animal Home, No Smoking Home, See Remarks, Natural Gas BBQ Hookup
Parking	Heated, Insulated, Single Garage Attached, Tandem, See Remarks

Interior

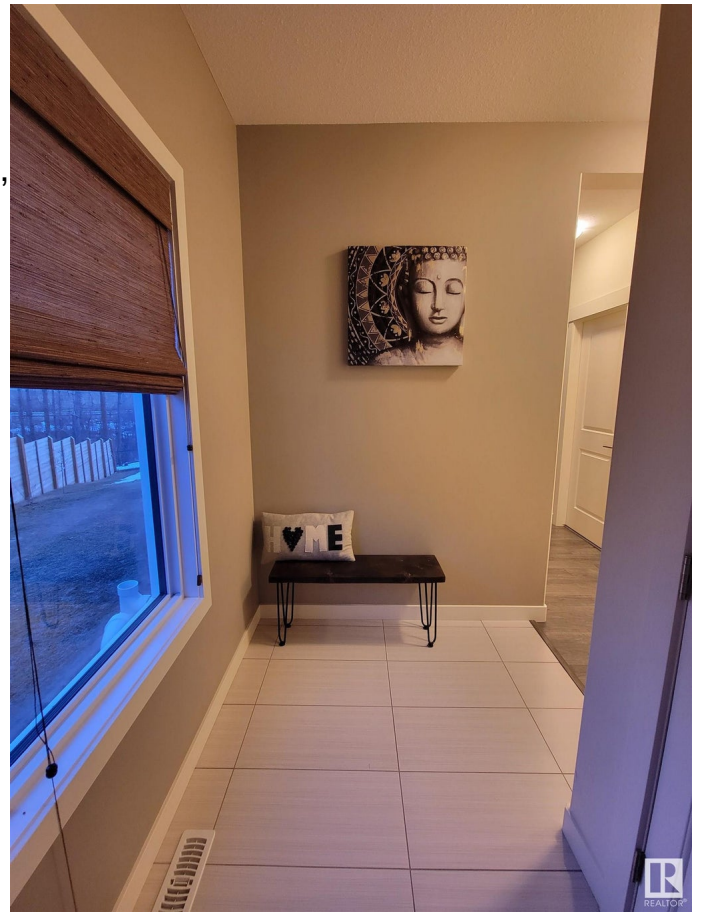
Interior Features	ensuite bathroom
Appliances	Air Conditioning-Central, Dishwasher-Built-In, Dryer, Microwave Hood Fan, Refrigerator, Stove-Electric, Washer, Water Softener, TV Wall Mount, Curtains and Blinds, Garage Heater
Heating	Forced Air-1, Natural Gas
Fireplace	Yes
Fireplaces	Glass Door, Remote Control, Wall Mount
Stories	2
Has Basement	Yes
Basement	Full, Unfinished

Exterior

Exterior	Wood, Metal, Stone, Vinyl
Exterior Features	Backs Onto Park/Trees, Trees/Shrubs, Landscaped, Remarks
Roof	Asphalt Shingles
Construction	Wood, Metal, Stone, Vinyl
Foundation	Slab

Additional Information

Date Listed	March 9th, 2025
Days on Market	28
Zoning	Zone 53
HOA Fees	210
HOA Fees Freq.	Annually



DATA IS DEEMED RELIABLE BUT IS NOT GUARANTEED ACCURATE BY THE REALTORS® ASSOCIATION OF EDMONTON. COPYRIGHT 2025 BY THE REALTORS® ASSOCIATION OF EDMONTON. ALL RIGHTS RESERVED. Trademarks are owned or controlled by the Canadian Real Estate Association (CREA) and identify real estate professionals who are members of CREA (REALTOR®, REALTORS®) and/or the quality of services they provide (MLS®, Multiple Listing Service®)

Listing information last updated on April 6th, 2025 at 12:32am MDT