

\$476,500 - 17924 98a Avenue, Edmonton

MLS® #E4425013

\$476,500

3 Bedroom, 2.00 Bathroom, 1,313 sqft
Single Family on 0.00 Acres

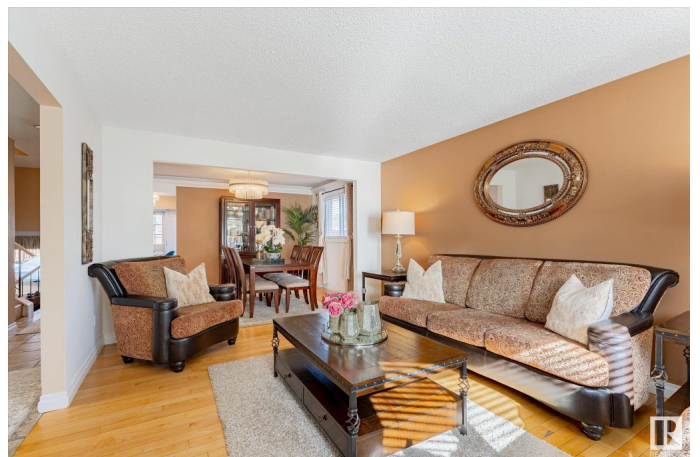
La Perle, Edmonton, AB

Upgraded and beautifully decorated west end home. Over 1800 sq.ft. of finished living space. This 3 bedroom home offers modern decorating maple hardwood and tile floors, high-end lighting, upgraded molding and trims. Main level contains large and bright living room, formal dining room and upgraded open eat-in kitchen. The kitchen overlooks a large family room with wood burning fireplace, the laundry room is on the same level. Upstairs is the master suite (with an ensuite bathroom and walk-in closet) . Two additional comfortable bedrooms, all with hardwood floors. The basement is fully finished with a large rumpus room and a hobby room/ den/ office. The garage is insulated. The upgrades over 5 yrs in this house are the roof, furnace, hot water tank, doors and many windows. Minutes from shopping , schools and transportation. Huge beautifully landscaped backyard with gigantic maintenance free composite deck. This home is waiting to be yours.

Built in 1981

Essential Information

MLS® #	E4425013
Price	\$476,500
Bedrooms	3



Bathrooms	2.00
Full Baths	2
Square Footage	1,313
Acres	0.00
Year Built	1981
Type	Single Family
Sub-Type	Detached Single Family
Style	4 Level Split
Status	Active

Community Information

Address	17924 98a Avenue
Area	Edmonton
Subdivision	La Perle
City	Edmonton
County	ALBERTA
Province	AB
Postal Code	T5T 3P4

Amenities

Amenities	Deck, Detectors Smoke, See Remarks
Parking Spaces	4
Parking	Double Garage Attached

Interior

Interior Features	ensuite bathroom
Appliances	Dishwasher-Built-In, Dryer, Garage Control, Garage Opener, Microwave Hood Fan, Refrigerator, Stove-Electric, Washer
Heating	Forced Air-1, Natural Gas
Stories	4
Has Basement	Yes
Basement	Full, Finished

Exterior

Exterior	Wood, Fiber Cement, Stone
Exterior Features	Fenced, Playground Nearby, Public Transportation, Schools, Shopping Nearby, See Remarks
Roof	Asphalt Shingles
Construction	Wood, Fiber Cement, Stone

Foundation Concrete Perimeter

Additional Information

Date Listed March 10th, 2025

Days on Market 24

Zoning Zone 20

DATA IS DEEMED RELIABLE BUT IS NOT GUARANTEED ACCURATE BY THE REALTORS® ASSOCIATION OF EDMONTON. COPYRIGHT 2025 BY THE REALTORS® ASSOCIATION OF EDMONTON. ALL RIGHTS RESERVED. Trademarks are owned or controlled by the Canadian Real Estate Association (CREA) and identify real estate professionals who are members of CREA (REALTOR®, REALTORS®) and/or the quality of services they provide (MLS®, Multiple Listing Service®)

Listing information last updated on April 3rd, 2025 at 5:17pm MDT