

\$649,900 - 2237 Blue Jay Landing Landing, Edmonton

MLS® #E4425548

\$649,900

5 Bedroom, 3.50 Bathroom, 2,343 sqft

Single Family on 0.00 Acres

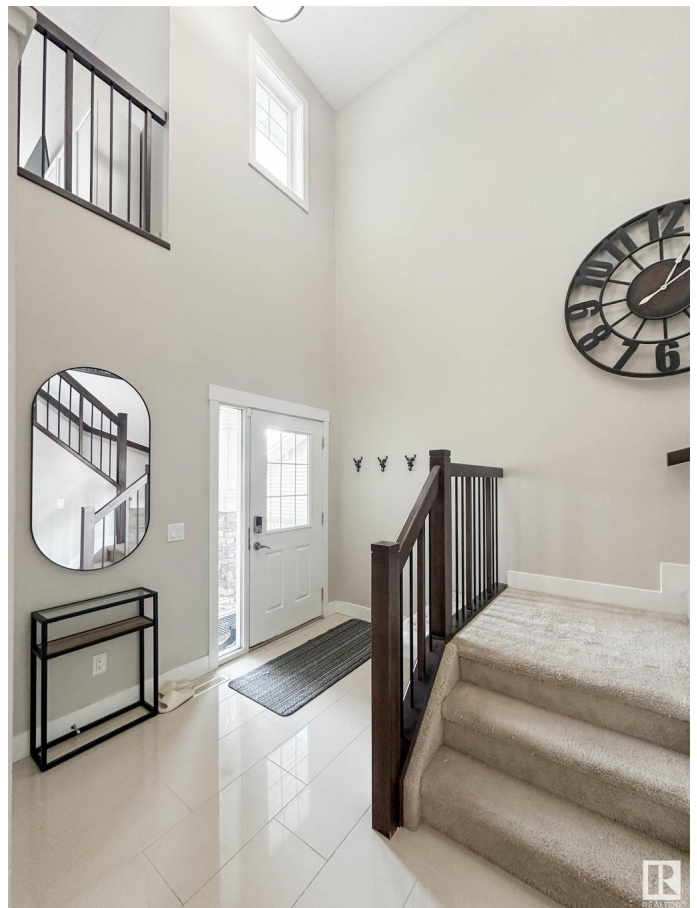
Starling, Edmonton, AB

Beautiful FULLY FINISHED two storey in the heart of Starling! Close to walking trails and access roads. Step in to grand entry way with soaring ceilings and head into the sun filled open concept living. Kitchen filled with ample storage wand walkthru pantry. Customized dining nook & stunning living room with cozy gas fireplace flanked by built in storage. Main floor den with double doors is perfect for a work from home lifestyle or playroom for kids! Upstairs ft HUGE bonus room, flex space, two large bedrooms, and 4pc bath. Primary suite is fit for a king w/ large walk-in closet & 5pc ensuite. Basement ft 9â€™™ ceilings and TWO additional bedrooms. Generous sized rec space is the perfect dual purpose. Addiontla 4pc bath finish the level. South facing yard with pergola covered deck & double attached garage make this the perfect move in ready home.

Built in 2013

Essential Information

| | |
|------------|-----------|
| MLS® # | E4425548 |
| Price | \$649,900 |
| Bedrooms | 5 |
| Bathrooms | 3.50 |
| Full Baths | 3 |
| Half Baths | 1 |



| | |
|----------------|------------------------|
| Square Footage | 2,343 |
| Acres | 0.00 |
| Year Built | 2013 |
| Type | Single Family |
| Sub-Type | Detached Single Family |
| Style | 2 Storey |
| Status | Active |

Community Information

| | |
|-------------|-------------------------------|
| Address | 2237 Blue Jay Landing Landing |
| Area | Edmonton |
| Subdivision | Starling |
| City | Edmonton |
| County | ALBERTA |
| Province | AB |
| Postal Code | T5S 0H8 |

Amenities

| | |
|-----------|---|
| Amenities | Ceiling 9 ft., Deck, Exterior Walls- 2"x6", See Remarks, 9 ft. Basement Ceiling |
| Parking | Double Garage Attached |

Interior

| | |
|-------------------|---|
| Interior Features | ensuite bathroom |
| Appliances | Dishwasher-Built-In, Dryer, Garage Control, Garage Opener, Microwave Hood Fan, Refrigerator, Stove-Electric, Washer, Window Coverings |
| Heating | Forced Air-1, Natural Gas |
| Fireplace | Yes |
| Fireplaces | Mantel, Stone Facing |
| Stories | 2 |
| Has Basement | Yes |
| Basement | Full, Finished |

Exterior

| | |
|-------------------|---|
| Exterior | Wood, Stone, Vinyl |
| Exterior Features | Fenced, Golf Nearby, Landscaped, Playground Nearby, Schools, Shopping Nearby, See Remarks |
| Roof | Asphalt Shingles |
| Construction | Wood, Stone, Vinyl |

Foundation Concrete Perimeter

Additional Information

Date Listed March 13th, 2025

Days on Market 20

Zoning Zone 59



DATA IS DEEMED RELIABLE BUT IS NOT GUARANTEED ACCURATE BY THE REALTORS® ASSOCIATION OF EDMONTON. COPYRIGHT 2025 BY THE REALTORS® ASSOCIATION OF EDMONTON. ALL RIGHTS RESERVED. Trademarks are owned or controlled by the Canadian Real Estate Association (CREA) and identify real estate professionals who are members of CREA (REALTOR®, REALTORS®) and/or the quality of services they provide (MLS®, Multiple Listing Service®)

Listing information last updated on April 2nd, 2025 at 3:47am MDT