

# \$214,888 - 209 142 Ebbers Boulevard, Edmonton

MLS® #E4425553

**\$214,888**

2 Bedroom, 2.00 Bathroom, 752 sqft

Condo / Townhouse on 0.00 Acres

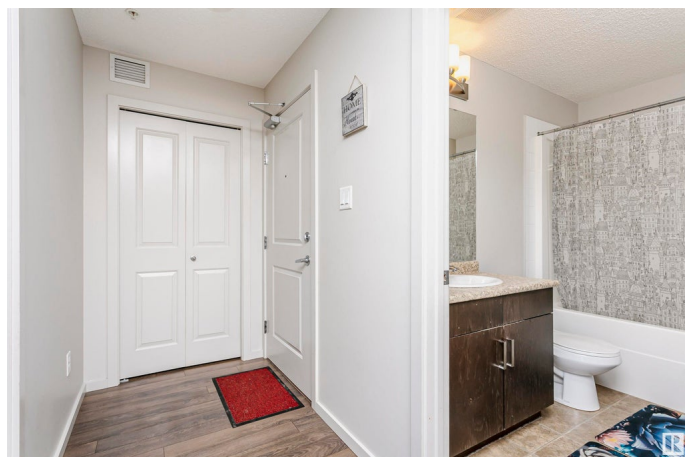
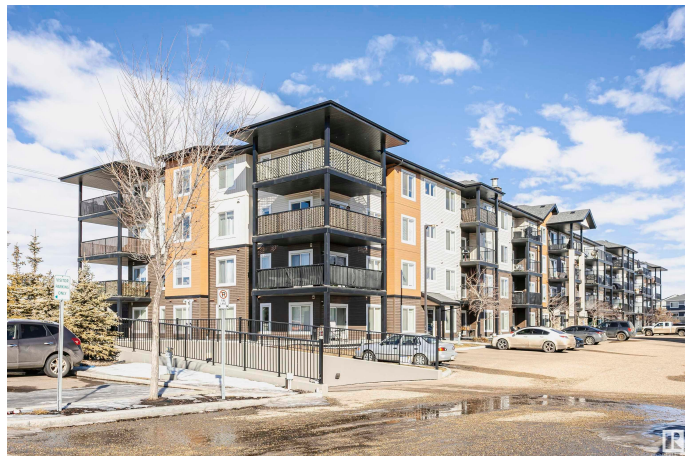
Ebbers, Edmonton, AB

Welcome to your new home! This upgraded second-floor unit features 2 spacious bedrooms, 2 full baths, a private covered deck, and 2 TITLED parking stalls (1 heated underground + 1 above ground stall). The kitchen offers a large island, a cozy coffee bar, and an open-concept living space with modern finishes and laminate flooring. The primary bedroom includes a walk-through closet and a 4-piece ensuite, while the second bedroom is roomy and close to another 4-piece bath. Enjoy the convenience of in-suite stacked laundry and easy access to one heated underground stall and one above-ground stall near the side door. Located steps from a huge green space, a new dog park, playgrounds, and walking paths, with quick access to the Henday and nearby shopping and restaurants. Ready to move in?

Built in 2016

## Essential Information

MLS® #	E4425553
Price	\$214,888
Bedrooms	2
Bathrooms	2.00
Full Baths	2
Square Footage	752
Acres	0.00



Year Built	2016
Type	Condo / Townhouse
Sub-Type	Lowrise Apartment
Style	Single Level Apartment
Status	Active

### **Community Information**

Address	209 142 Ebbers Boulevard
Area	Edmonton
Subdivision	Ebbers
City	Edmonton
County	ALBERTA
Province	AB
Postal Code	T5V 3W2

### **Amenities**

Amenities	Detectors Smoke, No Animal Home, No Smoking Home, Parking-Visitor, Secured Parking, Security Door, Storage-In-Suite, Vinyl Windows
Parking Spaces	2
Parking	Stall, Underground

### **Interior**

Interior Features	ensuite bathroom
Appliances	Dishwasher-Built-In, Microwave Hood Fan, Refrigerator, Stacked Washer/Dryer, Stove-Electric
Heating	Baseboard, Natural Gas
# of Stories	4
Stories	1
Has Basement	Yes
Basement	None, No Basement

### **Exterior**

Exterior	Wood, Vinyl
Exterior Features	Golf Nearby, Landscaped, Park/Reserve, Playground Nearby, Public Transportation, Schools, Shopping Nearby, Ski Hill Nearby
Roof	Asphalt Shingles
Construction	Wood, Vinyl
Foundation	Concrete Perimeter

### **Additional Information**

Date Listed	March 13th, 2025
Days on Market	22
Zoning	Zone 02
Condo Fee	\$438

DATA IS DEEMED RELIABLE BUT IS NOT GUARANTEED ACCURATE BY THE REALTORS® ASSOCIATION OF EDMONTON. COPYRIGHT 2025 BY THE REALTORS® ASSOCIATION OF EDMONTON. ALL RIGHTS RESERVED. Trademarks are owned or controlled by the Canadian Real Estate Association (CREA) and identify real estate professionals who are members of CREA (REALTOR®, REALTORS®) and/or the quality of services they provide (MLS®, Multiple Listing Service®)

Listing information last updated on April 4th, 2025 at 3:02pm MDT