

Courtesy Of Cassie Weber Of Century 21 Masters

\$814,900 - 7090 Kiviaq Crescent, Edmonton

MLS® #E4425807

\$814,900

3 Bedroom, 3.00 Bathroom, 2,648 sqft

Single Family on 0.00 Acres

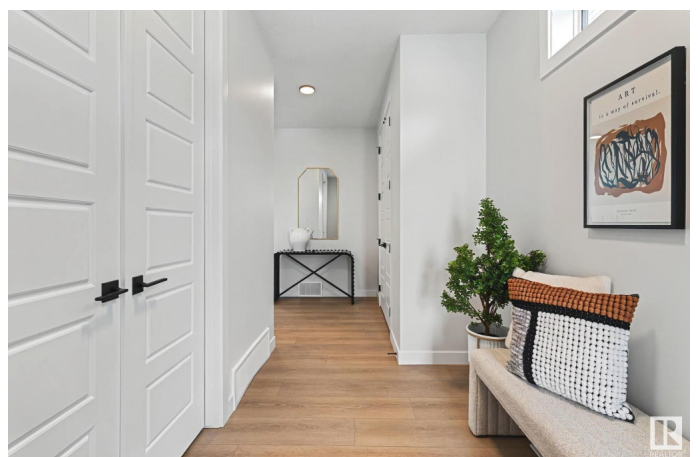
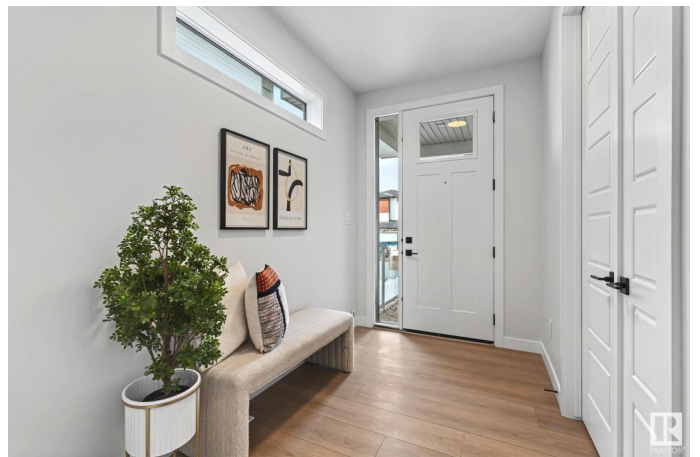
Keswick Area, Edmonton, AB

Introducing Vita Homes' latest masterpiece in Keswickâ€” Veneto III. A brand new 2-story home that epitomizes craftsmanship and meticulous attention to detail. Step inside and be captivated by the open-concept floor plan, starting with a versatile office/bdrm that seamlessly leads you to the heart of the home: the immaculate chef's kitchen accompanied by a beautiful walkthrough spice kitchen & pantry. This space is a culinary dream, a built-in bar area, and an expansive layout w/ 9 FT ceilings & 8 FT doors. The kitchen flows effortlessly into the living room, where the stunning "open to below" design creates a breathtaking statement. Upstairs, you'll find a spacious bonus room, 2 bdrms, a convenient laundry room, and the luxurious primary suite. The primary suite is a true retreat, offering a spa-like ensuite, dual vanity, freestanding tub that connects to a generous WI closet. Head into your additional sunken upstairs rec room & bar servery, accented w/ vaulted ceilings, an ideal space for entertainment!

Built in 2024

Essential Information

MLS® #	E4425807
Price	\$814,900
Bedrooms	3



Bathrooms	3.00
Full Baths	3
Square Footage	2,648
Acres	0.00
Year Built	2024
Type	Single Family
Sub-Type	Detached Single Family
Style	2 Storey
Status	Active

Community Information

Address	7090 Kiviaq Crescent
Area	Edmonton
Subdivision	Keswick Area
City	Edmonton
County	ALBERTA
Province	AB
Postal Code	T6W 5N7

Amenities

Amenities	Ceiling 9 ft., Deck, No Animal Home, No Smoking Home, Parking-Extra, Parking-Visitor, Vaulted Ceiling, See Remarks
Parking	Double Garage Attached

Interior

Interior Features	ensuite bathroom
Appliances	See Remarks
Heating	Forced Air-1, Natural Gas
Stories	2
Has Basement	Yes
Basement	Full, Unfinished

Exterior

Exterior	Wood, Stone, Vinyl
Exterior Features	Airport Nearby, Golf Nearby, Playground Nearby, Schools, Shopping Nearby, See Remarks
Roof	Asphalt Shingles
Construction	Wood, Stone, Vinyl
Foundation	Concrete Perimeter

Additional Information

Date Listed March 14th, 2025

Days on Market 21

Zoning Zone 56

DATA IS DEEMED RELIABLE BUT IS NOT GUARANTEED ACCURATE BY THE REALTORS® ASSOCIATION OF EDMONTON. COPYRIGHT 2025 BY THE REALTORS® ASSOCIATION OF EDMONTON. ALL RIGHTS RESERVED. Trademarks are owned or controlled by the Canadian Real Estate Association (CREA) and identify real estate professionals who are members of CREA (REALTOR®, REALTORS®) and/or the quality of services they provide (MLS®, Multiple Listing Service®)

Listing information last updated on April 3rd, 2025 at 10:17pm MDT