

Courtesy Of Heather Quist Of 2% Realty Pro

\$429,998 - 319 Pioneer Road, Spruce Grove

MLS® #E4426506

\$429,998

3 Bedroom, 2.50 Bathroom, 1,239 sqft
Single Family on 0.00 Acres

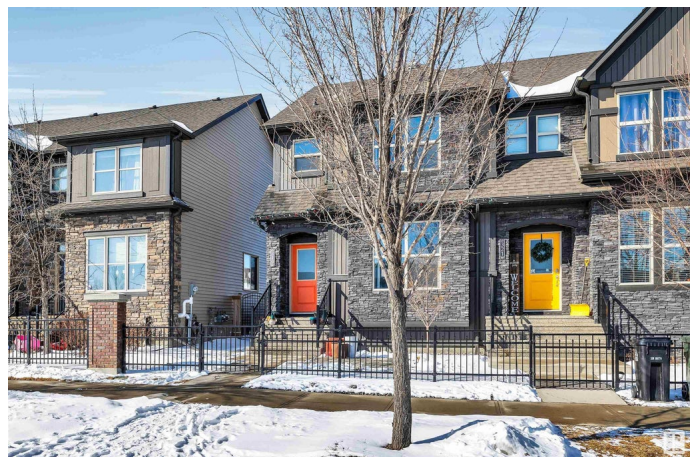
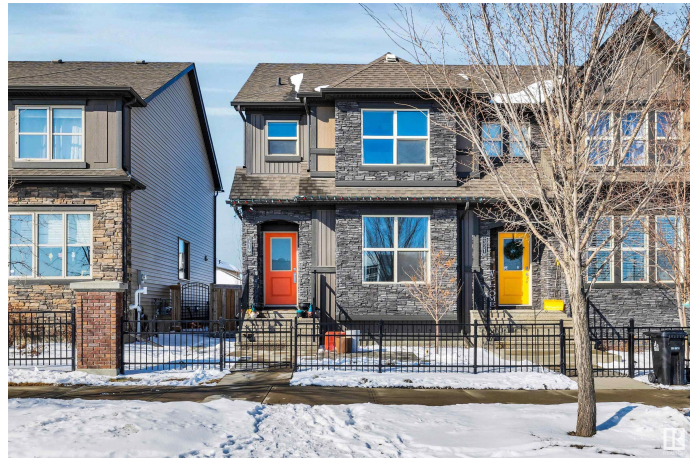
Greenbury, Spruce Grove, AB

This charming half duplex in the Greenberry neighbourhood of Spruce Grove offers the perfect combination of modern living and convenience, located directly across the street from a school. With 3 spacious bedrooms and 2.5 baths, this home is ideal for families or anyone looking for a comfortable space to call their own. The interior boasts stylish, modern fixtures throughout, providing a fresh and updated feel. Recently upgraded with air conditioning, added just last year, you'll stay cool and comfortable all year round. The double detached garage offers ample parking and storage, while the fully landscaped yard provides a beautiful outdoor space to relax and entertain. Don't miss out on this exceptional opportunity in a prime location, just a 5 minute walk to Jubilee Park!

Built in 2015

Essential Information

MLS® #	E4426506
Price	\$429,998
Bedrooms	3
Bathrooms	2.50
Full Baths	2
Half Baths	1
Square Footage	1,239
Acres	0.00



Year Built	2015
Type	Single Family
Sub-Type	Half Duplex
Style	2 Storey
Status	Active

Community Information

Address	319 Pioneer Road
Area	Spruce Grove
Subdivision	Greenbury
City	Spruce Grove
County	ALBERTA
Province	AB
Postal Code	T7X 1T1

Amenities

Amenities	Air Conditioner, Ceiling 9 ft., Closet Organizers, Deck, No Animal Home, No Smoking Home, Patio, Smart/Program. Thermostat, Vinyl Windows, 9 ft. Basement Ceiling
Parking Spaces	4
Parking	Double Garage Detached, Front Drive Access, Rear Drive Access

Interior

Interior Features	ensuite bathroom
Appliances	Air Conditioning-Central, Dishwasher-Built-In, Dryer, Fan-Ceiling, Garage Control, Garage Opener, Humidifier-Power(Furnace), Microwave Hood Fan, Refrigerator, Stove-Electric, Washer
Heating	Forced Air-1, Natural Gas
Stories	2
Has Basement	Yes
Basement	Full, Unfinished

Exterior

Exterior	Wood, Stone, Vinyl
Exterior Features	Back Lane, Fenced, Fruit Trees/Shrubs, Golf Nearby, Landscaped, Park/Reserve, Playground Nearby, Public Transportation, Schools, Shopping Nearby
Roof	Asphalt Shingles
Construction	Wood, Stone, Vinyl
Foundation	Concrete Perimeter

Additional Information

Date Listed March 20th, 2025

Days on Market 15

Zoning Zone 91

DATA IS DEEMED RELIABLE BUT IS NOT GUARANTEED ACCURATE BY THE REALTORS® ASSOCIATION OF EDMONTON. COPYRIGHT 2025 BY THE REALTORS® ASSOCIATION OF EDMONTON. ALL RIGHTS RESERVED. Trademarks are owned or controlled by the Canadian Real Estate Association (CREA) and identify real estate professionals who are members of CREA (REALTOR®, REALTORS®) and/or the quality of services they provide (MLS®, Multiple Listing Service®)

Listing information last updated on April 4th, 2025 at 7:17pm MDT