

# \$524,900 - 8015 22 Avenue, Edmonton

MLS® #E4426541

**\$524,900**

4 Bedroom, 3.50 Bathroom, 1,505 sqft  
Single Family on 0.00 Acres

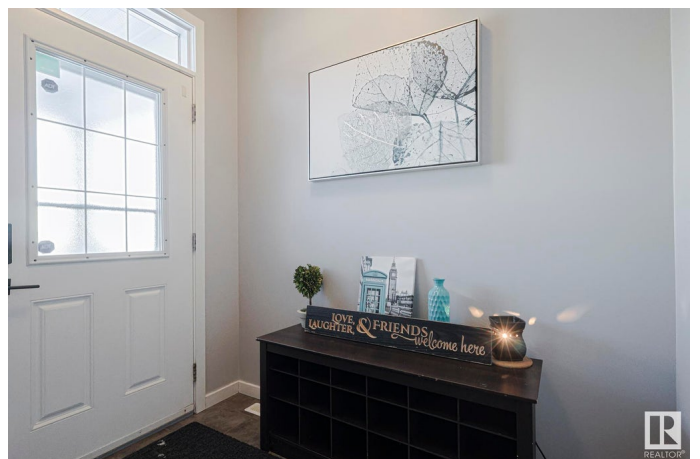
Summerside, Edmonton, AB

Discover your perfect family retreat in Summerside !This 4-bed, 3.5-bath home offers over 2200 sqft of finished space on 3 levels !The open-concept main floor boasts a stunning kitchen w/ NEW quartz countertops, a deep double sink, double-door fridge, & flat-top stove, alongside a cozy fireplace and 9â€™™ ceilings with built-in speakers. Upstairs, enjoy a generous primary suite with a walk-in closet and 4-pce ensuite with soaker tub, plus convenient upstairs laundry. Two more bedrooms and a full bath complete 2nd level.The fully and professionally finished basement features a bath, living room, and bedroom. Outside, relax on the large deck with a gazebo in your low-maintenance, fenced yard. NEW upgrades include laminate vinyl plank flooring & Bandage blinds throughout the house , on-demand hot water, washer/dryer with pedestals, and fresh paint. With a detached double garage, air conditioner, charming front porch, and prime location across from K-9 School near the lake & clubhouse, this home is a must-see!

Built in 2012

## Essential Information

MLS® #	E4426541
Price	\$524,900



Bedrooms	4
Bathrooms	3.50
Full Baths	3
Half Baths	1
Square Footage	1,505
Acres	0.00
Year Built	2012
Type	Single Family
Sub-Type	Detached Single Family
Style	2 Storey
Status	Active

### **Community Information**

Address	8015 22 Avenue
Area	Edmonton
Subdivision	Summerside
City	Edmonton
County	ALBERTA
Province	AB
Postal Code	T6X 0Z1

### **Amenities**

Amenities	Air Conditioner, Ceiling 9 ft., Front Porch, Hot Water Tankless, Lake Privileges
Parking	Double Garage Detached

### **Interior**

Interior Features	ensuite bathroom
Appliances	Air Conditioning-Central, Dishwasher-Built-In, Dryer, Garage Opener, Microwave Hood Fan, Refrigerator, Stove-Electric, Washer
Heating	Forced Air-1, Natural Gas
Fireplace	Yes
Fireplaces	Tile Surround
Stories	3
Has Basement	Yes
Basement	Full, Finished

### **Exterior**

Exterior	Wood, Vinyl
----------	-------------

Exterior Features	Back Lane, Beach Access, Low Maintenance Landscape, Park/Reserve, Playground Nearby, Public Transportation, Schools, Shopping Nearby
Roof	Asphalt Shingles
Construction	Wood, Vinyl
Foundation	Concrete Perimeter

### **School Information**

Elementary	Michael Strembitsky School
Middle	Michael Strembitsky School

### **Additional Information**

Date Listed	March 20th, 2025
Days on Market	14
Zoning	Zone 53
HOA Fees	466.61
HOA Fees Freq.	Annually

DATA IS DEEMED RELIABLE BUT IS NOT GUARANTEED ACCURATE BY THE REALTORS® ASSOCIATION OF EDMONTON. COPYRIGHT 2025 BY THE REALTORS® ASSOCIATION OF EDMONTON. ALL RIGHTS RESERVED. Trademarks are owned or controlled by the Canadian Real Estate Association (CREA) and identify real estate professionals who are members of CREA (REALTOR®, REALTORS®) and/or the quality of services they provide (MLS®, Multiple Listing Service®)

Listing information last updated on April 3rd, 2025 at 3:47am MDT