

Courtesy Of Kendra N Chisholm Of CIR Realty

\$449,900 - 12835 205 Street, Edmonton

MLS® #E4427540

\$449,900

3 Bedroom, 2.50 Bathroom, 1,703 sqft
Single Family on 0.00 Acres

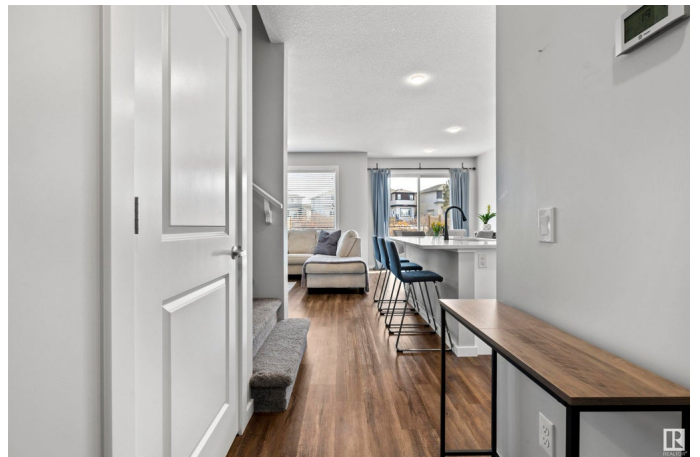
Trumpeter Area, Edmonton, AB

Bathed in natural light from large windows, this stunning open-concept home features luxury vinyl plank flooring throughout the main level and central A/C! The pristine kitchen boasts crisp white cabinetry, sparkling quartz countertops, stylish grey backsplash, stainless steel appliances, a corner pantry, & a substantial island with breakfast bar. Flow effortlessly into the bright living room, where a richly painted feature wall steals the show, perfectly framing a linear electric fireplace adorned with shiplap accents and a decorative ledge. Sliding doors lead to a sunny SE-facing backyard with a large deck & green space. Upstairs, enjoy a cozy family room, full bath, & 3 spacious bedrooms, including the primary suite with a walk-in closet, ensuite w/ dual vanity, deep soaking tub, & separate shower. For those who love possibilities—the unspoiled basement is a blank canvas, ready for your imagination to run wild. Nestled in Trumpeter, enjoy scenic trails, Big Lake, & quick access to the Henday.

Built in 2019

Essential Information

MLS® #	E4427540
Price	\$449,900
Bedrooms	3



Bathrooms	2.50
Full Baths	2
Half Baths	1
Square Footage	1,703
Acres	0.00
Year Built	2019
Type	Single Family
Sub-Type	Half Duplex
Style	2 Storey
Status	Active

Community Information

Address	12835 205 Street
Area	Edmonton
Subdivision	Trumpeter Area
City	Edmonton
County	ALBERTA
Province	AB
Postal Code	T5S 0L7

Amenities

Amenities	Deck
Parking Spaces	4
Parking	Double Garage Attached, Front Drive Access

Interior

Interior Features	ensuite bathroom
Appliances	Air Conditioning-Central, Dishwasher-Built-In, Dryer, Garage Control, Garage Opener, Microwave Hood Fan, Refrigerator, Stove-Electric, Washer
Heating	Forced Air-1, Natural Gas
Fireplace	Yes
Fireplaces	Insert
Stories	2
Has Basement	Yes
Basement	Full, Unfinished

Exterior

Exterior	Wood, Stone, Vinyl
----------	--------------------

Exterior Features	Fenced, Flat Site, Golf Nearby, Landscaped, Low Maintenance Landscape, Park/Reserve, Picnic Area, Playground Nearby, Public Transportation, Schools, Shopping Nearby
Roof	Asphalt Shingles
Construction	Wood, Stone, Vinyl
Foundation	Concrete Perimeter

School Information

Elementary	Annunciation Catholic
Middle	St. Thomas More
High	St. Francis Xavier/Jasper

Additional Information

Date Listed	March 26th, 2025
Days on Market	7
Zoning	Zone 59

DATA IS DEEMED RELIABLE BUT IS NOT GUARANTEED ACCURATE BY THE REALTORS® ASSOCIATION OF EDMONTON. COPYRIGHT 2025 BY THE REALTORS® ASSOCIATION OF EDMONTON. ALL RIGHTS RESERVED. Trademarks are owned or controlled by the Canadian Real Estate Association (CREA) and identify real estate professionals who are members of CREA (REALTOR®, REALTORS®) and/or the quality of services they provide (MLS®, Multiple Listing Service®)

Listing information last updated on April 2nd, 2025 at 3:02am MDT