

\$339,900 - 15611 84 Street, Edmonton

MLS® #E4431648

\$339,900

3 Bedroom, 2.00 Bathroom, 744 sqft

Single Family on 0.00 Acres

Belle Rive, Edmonton, AB

Very clean and well maintained fully finished 1982 built 4 level split in the neighborhood of Bellerive in northeast Edmonton. This home has a total of 3 bedrooms, 2 bathrooms, and is nicely finished with ceramic tile, laminate flooring, and more. The main floor has a large sunken living room, bright and open kitchen with quartz counter top and ceramic tile, and a private side entrance. The upper level has a large primary bedroom and the lower level has 2 spacious bedrooms. The bathrooms are a 4 piece and a 3 piece and nicely upgraded. The 4th level is fully finished with a large entertainment/recreation room and laundry area. The home has a fully fenced private yard, large 2 tiered deck octagon style deck 12x12 ft in size. The double detached garage is 18x22 in size with a garage opener. This home is available in 30 to 60 days. The sale of the home includes all 5 appliances and window coverings. Located close to all amenities and a short walk to LRT, and a drive to Anthony Henday and Yellowhead Trail

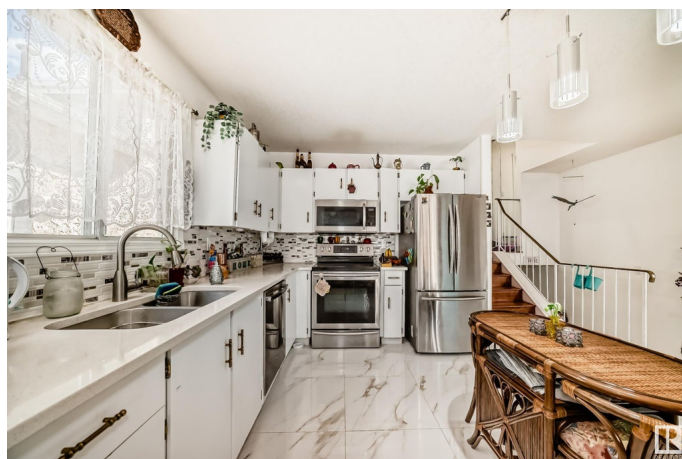
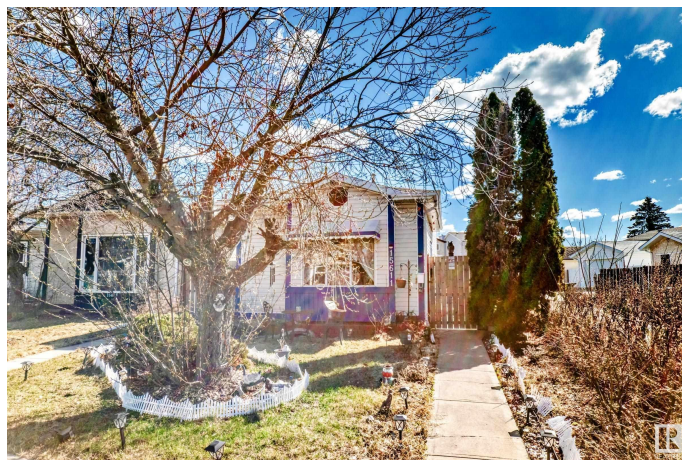
Built in 1982

Essential Information

MLS® # E4431648

Price \$339,900

Bedrooms 3



Bathrooms	2.00
Full Baths	2
Square Footage	744
Acres	0.00
Year Built	1982
Type	Single Family
Sub-Type	Detached Single Family
Style	2 Storey
Status	Active

Community Information

Address	15611 84 Street
Area	Edmonton
Subdivision	Belle Rive
City	Edmonton
County	ALBERTA
Province	AB
Postal Code	T5E 2N9

Amenities

Amenities	See Remarks
Parking	Double Garage Detached

Interior

Appliances	Dishwasher-Built-In, Dryer, Garage Control, Garage Opener, Refrigerator, Stove-Electric, Washer, Window Coverings
Heating	Forced Air-1, Natural Gas
Stories	3
Has Basement	Yes
Basement	Full, Partially Finished

Exterior

Exterior	Wood, Vinyl
Exterior Features	Park/Reserve, Public Transportation, Schools, Shopping Nearby
Roof	Asphalt Shingles
Construction	Wood, Vinyl
Foundation	Concrete Perimeter

Additional Information

Date Listed April 18th, 2025

Days on Market 3

Zoning Zone 28

DATA IS DEEMED RELIABLE BUT IS NOT GUARANTEED ACCURATE BY THE REALTORS® ASSOCIATION OF EDMONTON. COPYRIGHT 2025 BY THE REALTORS® ASSOCIATION OF EDMONTON. ALL RIGHTS RESERVED. Trademarks are owned or controlled by the Canadian Real Estate Association (CREA) and identify real estate professionals who are members of CREA (REALTOR®, REALTORS®) and/or the quality of services they provide (MLS®, Multiple Listing Service®)

Listing information last updated on April 21st, 2025 at 3:02am MDT