

## \$180,000 - 77 150 Edwards Drive, Edmonton

MLS® #E4431694

**\$180,000**

1 Bedroom, 1.00 Bathroom, 739 sqft

Condo / Townhouse on 0.00 Acres

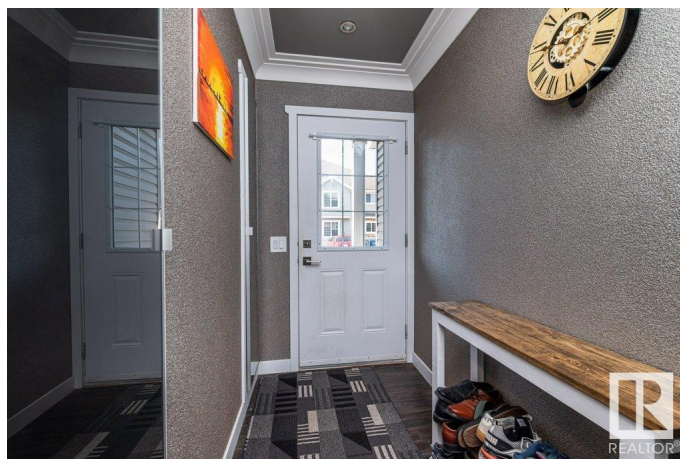
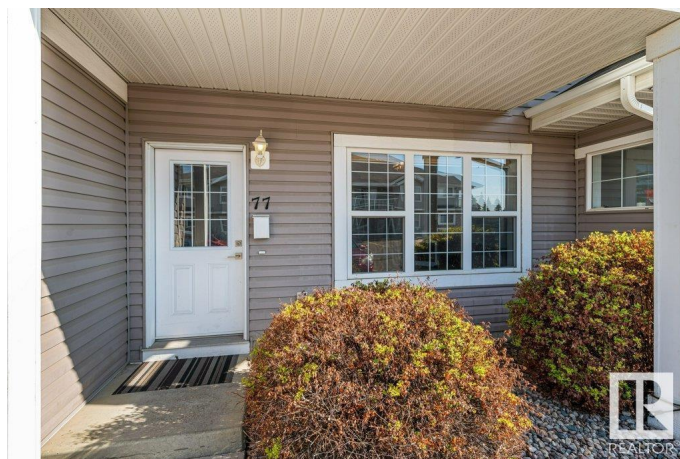
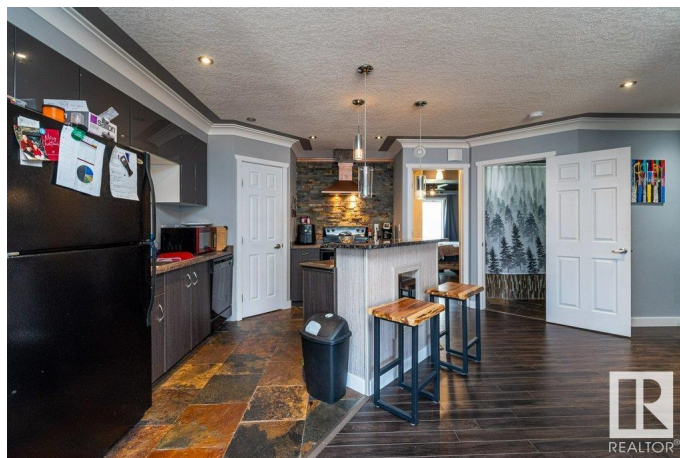
Ellerslie, Edmonton, AB

This unique carriage-style condo has been beautifully updated and is the perfect starter home or investment property. There's a spacious living and dining room with built-in cabinetry and corner electric fireplace. In the kitchen you will find slate flooring, a dine-in island, and a corner pantry while the dining area is extra spacious with beautiful built-ins. The 4-pc bath is a dream with newer vanity, vessel sink, tile surround, rain fall shower and slate flooring. Off the primary bedroom there is a walk-in closet with in-suite laundry and sliding door access to the private patio. Upgrades include pot lights, light fixtures, moldings, textured feature walls, newer moldings and coffered ceilings. With ample closet space, in-suite storage, and the extra built-in for shoes right off the front entrance you will appreciate just how efficiently everything fits into this lovely home!

Built in 2005

### Essential Information

MLS® #	E4431694
Price	\$180,000
Bedrooms	1
Bathrooms	1.00
Full Baths	1
Square Footage	739



Acres	0.00
Year Built	2005
Type	Condo / Townhouse
Sub-Type	Carriage
Style	Bungalow
Status	Active

### Community Information

Address	77 150 Edwards Drive
Area	Edmonton
Subdivision	Ellerslie
City	Edmonton
County	ALBERTA
Province	AB
Postal Code	T6X 1M4

### Amenities

Amenities	Detectors Smoke, No Smoking Home, Parking-Plug-Ins, Parking-Visitor
Parking Spaces	1
Parking	Stall

### Interior

Appliances	Dishwasher-Built-In, Hood Fan, Oven-Microwave, Stacked Washer/Dryer, Window Coverings
Heating	In Floor Heat System, Natural Gas
Fireplace	Yes
Fireplaces	Corner
Stories	1
Has Basement	Yes
Basement	None, No Basement

### Exterior

Exterior	Wood, Stone, Vinyl
Exterior Features	Flat Site, Low Maintenance Landscape, Playground Nearby, Public Transportation, Schools, Shopping Nearby
Roof	Asphalt Shingles
Construction	Wood, Stone, Vinyl
Foundation	Concrete Perimeter

### Additional Information

Date Listed	April 18th, 2025
Days on Market	3
Zoning	Zone 53
Condo Fee	\$399

DATA IS DEEMED RELIABLE BUT IS NOT GUARANTEED ACCURATE BY THE REALTORS® ASSOCIATION OF EDMONTON. COPYRIGHT 2025 BY THE REALTORS® ASSOCIATION OF EDMONTON. ALL RIGHTS RESERVED. Trademarks are owned or controlled by the Canadian Real Estate Association (CREA) and identify real estate professionals who are members of CREA (REALTOR®, REALTORS®) and/or the quality of services they provide (MLS®, Multiple Listing Service®)

Listing information last updated on April 21st, 2025 at 3:02am MDT